



2 THE PAVILIONS

5,266 sq ft (489.23 sqm)
OFFICE BUILDING TO LET

RUSCOMBE BUSINESS PARK | TWYFORD



Self contained offices set within tranquil business park

- ◆ Large kitchen / break out area
- ◆ Outside private decking
- ◆ Open plan with private offices and meeting room
- ◆ VRF heat recovery system
- ◆ Fully carpeted floors
- ◆ Suspended ceilings
- ◆ Recessed LED lighting
- ◆ Kitchen facilities
- ◆ Perimeter trunking
- ◆ Shower and WC facilities
- ◆ 18 on-site car parking spaces
- ◆ EPC D 99

www.thepavilionstwiford.co.uk



2 THE PAVILIONS

A two story modern office building in an attractive setting
Available on a floor by floor basis

TRANQUIL PARK ENVIRONMENT

The Pavilions comprises eight modern 2 storey office buildings and one light industrial unit, set within a landscaped business park benefitting from excellent car parking.

LOCAL AMENITIES

The Pavilions is situated in Twyford Village within the Royal County of Berkshire, it retains its village charm whilst delivering all the modern amenities that a truly global business demands.

This well-established location sits between the commuter towns of Reading, Maidenhead and Henley-on-Thames within the Thames Valley.

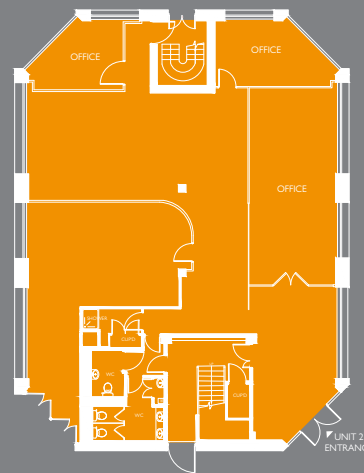
Twyford is part of an area experiencing unprecedented investment and growth, with a sizable labour market.

Local amenities include:

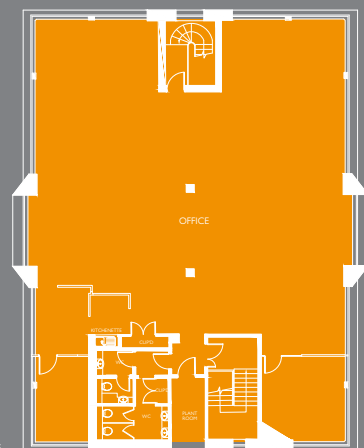
- Waitrose
- Post Office
- Tesco Express
- A range of restaurants
- Banks

ACCOMMODATION NIA

	Sq ft	Sq m
Ground floor	2,571	238.85
First floor	2,695	250.37
Total	5,266	489.22



GROUND FLOOR



FIRST FLOOR



LEGAL COSTS

Each party to pay their own legal costs.

VAT

We understand that this property is elected for VAT. All figures quoted are exclusive of VAT.

TERMS

Affectively full repairing and insuring lease for a term to be agreed. The lease will be direct with the Landlord.

BUSINESS RATES

Business Rates will be payable by the Tenant direct with the local authority.



Reading
(6 mins)

TWYFORD

Maidenhead
(7 mins)

Taplow

Burnham

Slough
(15 mins)

Langley

Iver

West Drayton

Heathrow Airport
(33 mins)

Hayes & Harlington

Southall

Hanwell

West Ealing

Ealing Broadway

Acton Main Line

PADDINGTON

(44 mins)

Bond Street

Tottenham Court Road
(50 mins)

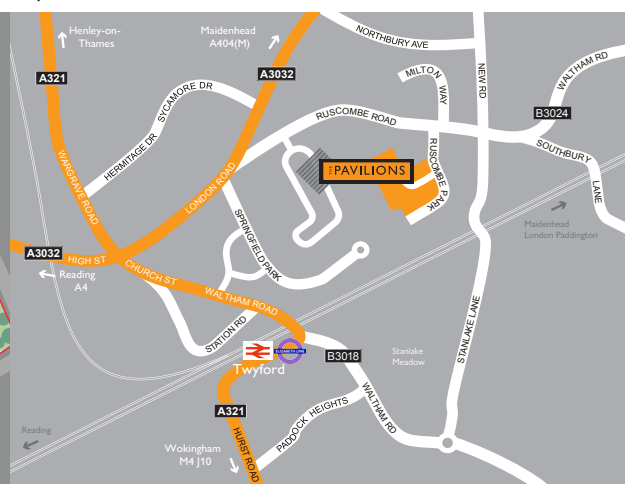
Farringdon

Liverpool Street
(55 mins)

Whitechapel

Canary Wharf

Stratford



ACCESSIBLE LOCATION

Ruscombe Business Park is located on the edge of Twyford Village in a highly accessible location, a short drive to the A4 between Maidenhead and Reading.

The M4 Motorway is easily reached via Junction 8/9 or the A329m link to Junction 10.

The mainline station (Elizabeth Line) and centre amenities are a short walk away.

VIEWING

Please contact joint agents.



Mark Harris
07598 450586
mark@pagehardyharris.co.uk

Sophie Holmes
07763 565056
sophie@pagehardyharris.co.uk



Jennifer Lamb
07917 217182
jhlamb@lsh.co.uk

Archie Chitty
07544 801888
achitty@lsh.co.uk

These particulars are provided without any guarantee by the vendor/lessor or agents and do not form part of any contract. Enquiring parties should satisfy themselves as to the correctness of any information or statement made. All measurements are approximate. All figures quoted are exclusive of VAT which may be chargeable. Generated March 2023.

www.thepavilionstwtyford.co.uk